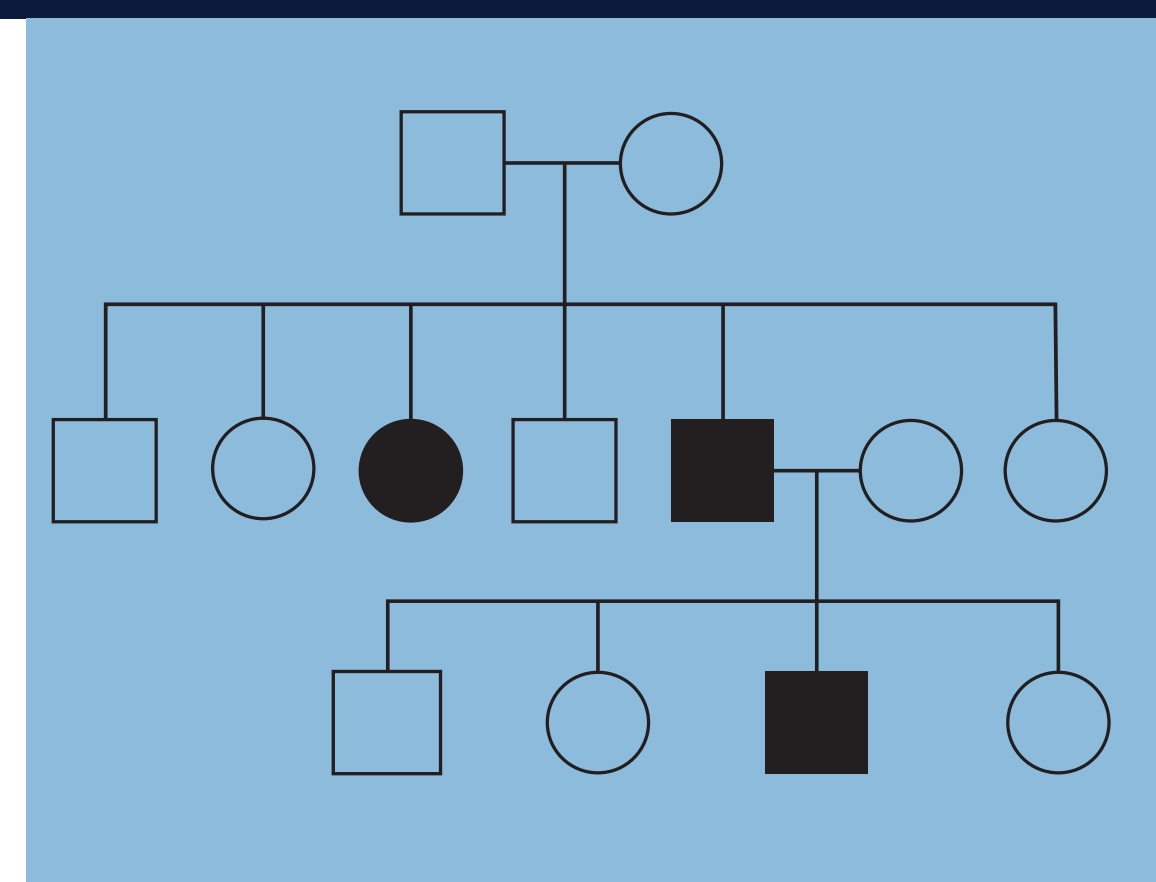
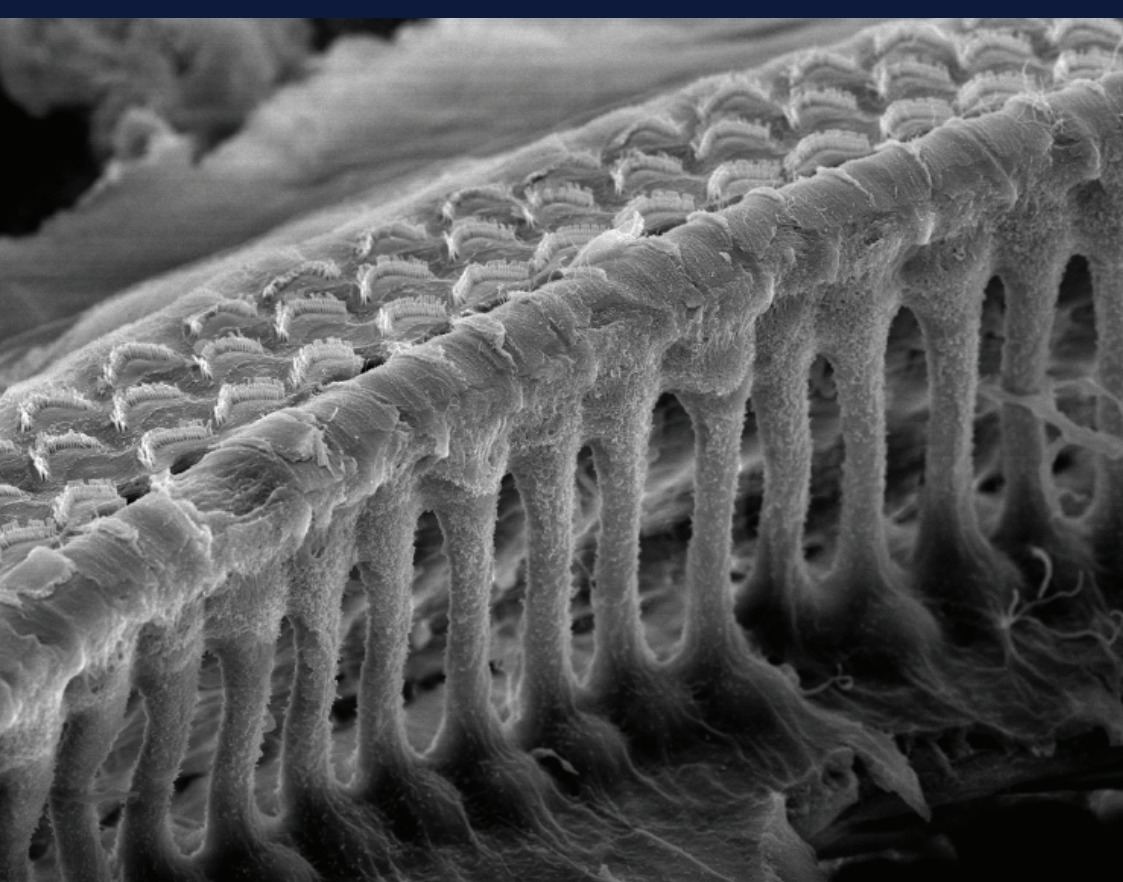


National Institute on Deafness and Other Communication Disorders

Beyond the Lab, Understanding Communication Disorders Speaker Series

Human Hereditary Deafness is Complex Yet Easy to Grasp



Thomas B. Friedman, Ph.D.
Chief, Section on Human Genetics

Tuesday, May 28, 2019, noon–1 p.m.

Dale and Betty Bumpers Vaccine Research Center
Building 40, Rooms 1201/1203
NIH Campus

This program is sponsored by the National Institute on Deafness and Other Communication Disorders (NIDCD), which is part of the National Institutes of Health (NIH), and a component of the U.S. Department of Health and Human Services. For questions or reasonable accommodation requests, contact Lonnie Lisle at **301-827-8183** or email lislel@nidcd.nih.gov.



National Institute on
Deafness and Other
Communication Disorders